

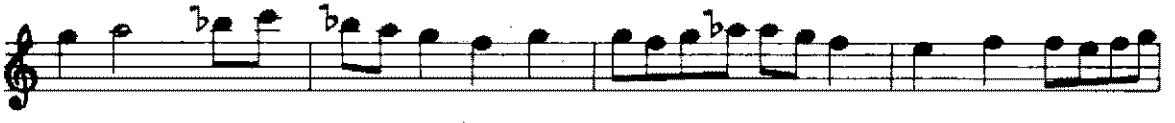
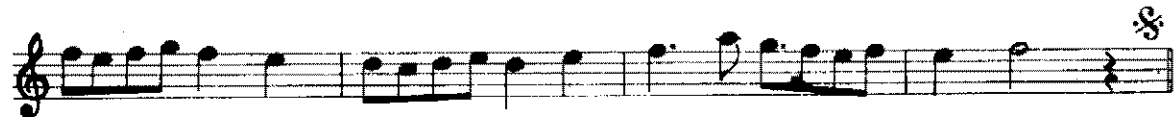
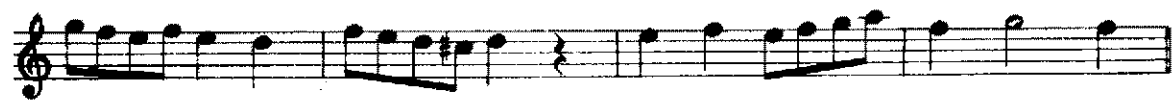
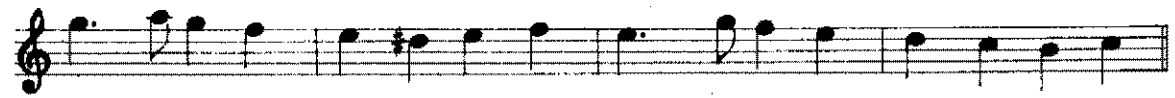
ACEM MURASSÂ PEŞREV

Berefsan
(Yürük)

FARÂBÎ

1.

2.



This image shows a page of musical notation for a single melodic line, consisting of ten staves. The notation is written in a standard staff with a treble clef and a key signature of one sharp (F#). The music features a variety of rhythmic patterns, including eighth and sixteenth notes, and rests. Several measures contain triplets, indicated by a circled '3' above the notes. There are also several accidentals: flats (b) and naturals (♮). The piece ends with a double bar line and a repeat sign (two dots) at the end of the final staff.