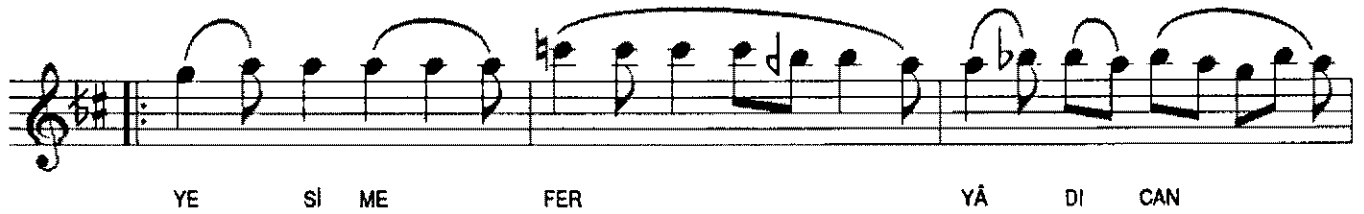
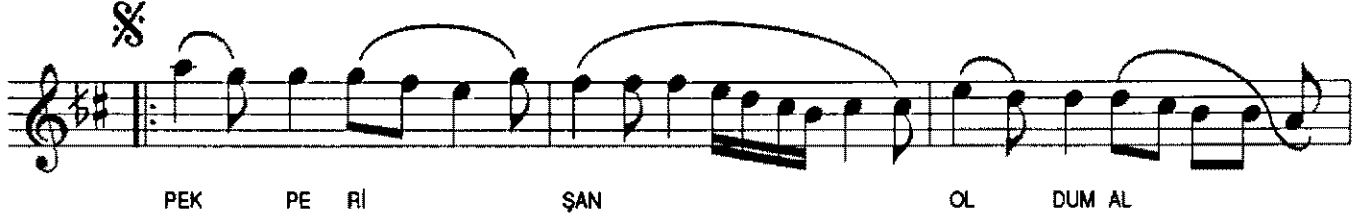
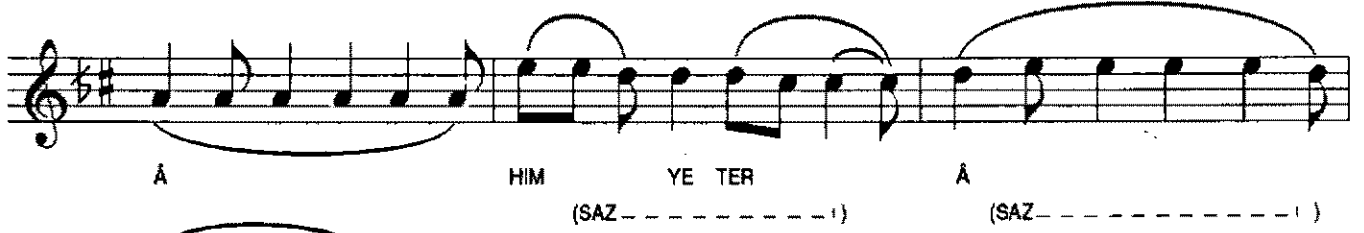


HİCÂZ ŞARKI
SİNE-İ SÜZÂNIMA ÂHİM YETER

USÛLÜ : CÜRCUNA

MÜZİK : Lemi ATLI
SÖZ : -

♩ = 200



HİCÂZ ŞARKI
SİNE-İ SÜZÂNIMA ÂHİM YETER
- 2 -



GÂ

HIM YE TER

CAN

(SAZ- - - - -)

(SAZ- - - - -)



GÂ

HIM

YE

TER

TER

⊕ Karar



TER

SİNE İ SÜZÂNIMA ÂHİM YETER
PEK PERİŞAN OLDUM ALLAH'IM YETER
YE'SİME FERYÂD-I CANGÂHİM YETER
PEK PERİŞAN OLDUM ALLAH'IM YETER