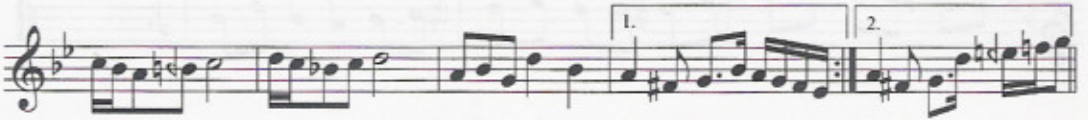
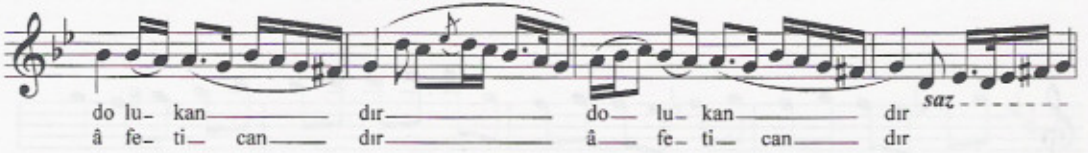
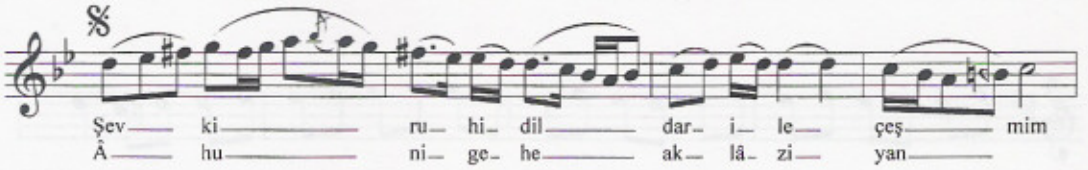
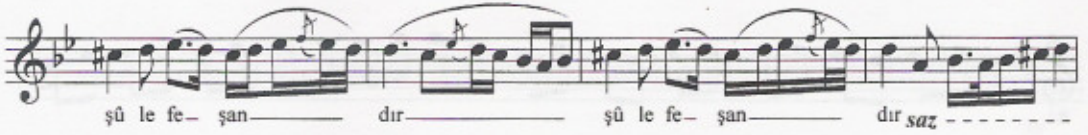
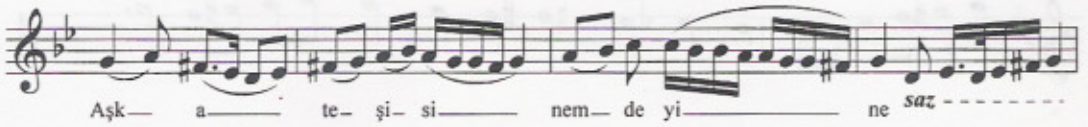
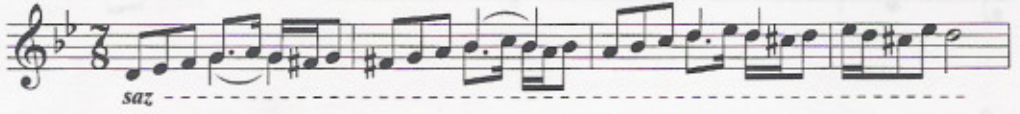


Aşk âteşi sinemde yine şûle-feşandır

Nihavend
Devri Hindi

Beste: Hacı Ârif Bey
Güfte: Mehmed Sadi Bey



saz
 Bu hâle
 le koyan hep beni bir
 yosma civandır
 dır *saz*
 Yek-tâ-yı za-man şû-hi ci-han-
 ru-hi re-van-dır rû-hi re-van-dır *saz*

Aşk âteşi sinemde yine şûle-feşandır,
 Şevk-i dildâr ile çeşmim dolu kandır.
 Biçâre gönül derd ile bitâb-ü tûvandır,
 Bu hâle koyan hep beni bir yosma civandır.
 Yektâ-yı zaman şûh-i cihan rûh-i revandır,
 Âhû-nigehi akla siyân âfet-i candır.