

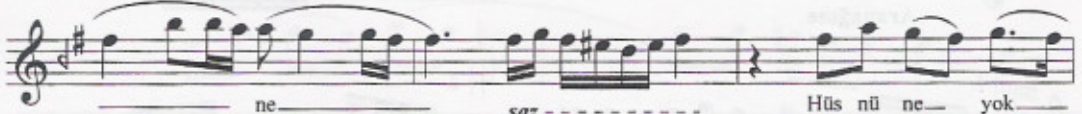
Şâhâne gözler şâhâne

Eviç
Sofyan

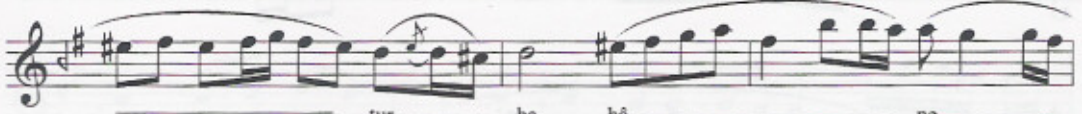
Rumeli Türküsü



Şâ hâ ne— göz— ler— şâ hâ—
U çan kuş— lar— ke— bap ol—



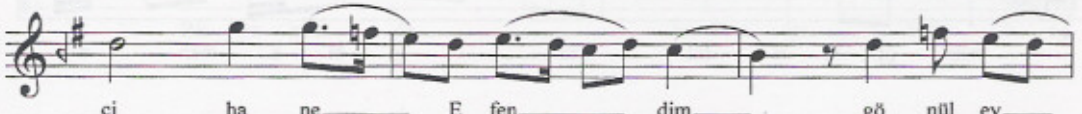
ne— saz— Hüs nü ne— yok—
sa— A kan su— lar—



tur— ba hâ— ne—
şa— rap ol— sa—



saz— Sü ley man— ol— sam—
Ça lan saz— lar— re—



ci ha ne— E fen— dim— gö nül ey—
bap ol sa— E fen— dim— gö nül ey—

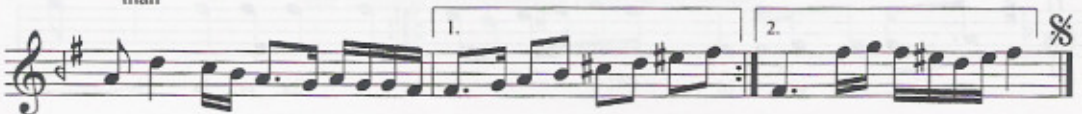


len— mez As— la ah— a— man a—
len— mez As— la ah— a— man a—

Aranağme



man
man



Şâhâne gözler şâhâne,
Hüsnüne yoktur bahâne,
Süleyman olsam cihane.

Uçan kuşlar kebab olsa,
Akan sular şarap olsa,
Çalan sazlar rebap olsa.

Efendim gönül eylenmez,
Asla ah aman aman.

Efendim gönül eylenmez,
Asla ah aman aman.